

Standout features

The house is situated down a right-of-way on a small, low-maintenance section. It is surrounded by a number of other homes, but the previous owners and those of neighbouring properties had the foresight to plant generously, ensuring plenty of privacy. Although it wasn't the couple's dream home, it did have some alluring features – namely the high stud and angled ceilings in the living areas and master bedroom that create a sense of scale and space.

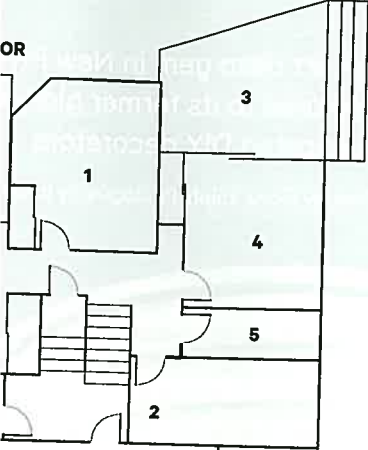
Another drawcard was the well-established flame tree next to the upstairs deck, which offers privacy as well as shade during the warmer months. "The lush green leaves become part of our interior when we open the bifold doors," says Sarah. "The deck extends out from our kitchen and living area and essentially provides another room."

LIVING The main living area is striking with its strong black-and-white aesthetic and abundant textures. An original 1960s white Kartell Componibili unit is used to hide away all those messy electrical cords.

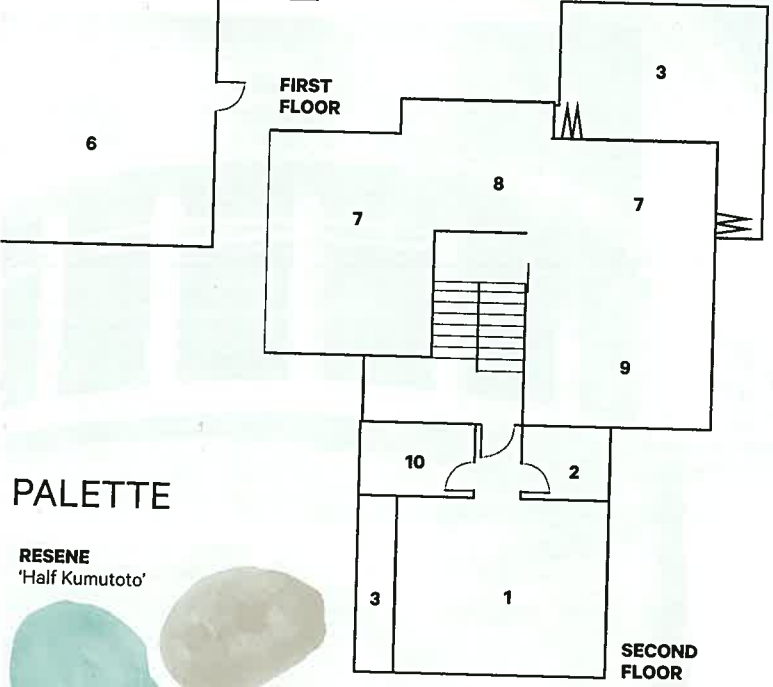


Fate Sarah and her business partner, Annabel Taylor, own wallpaper retailer Paper Room in Ponsonby, Auckland. They met while studying at the Nanette Cameron Interior Design School in 2008, and their friendship was cemented on the course's Australian interior design tour. Soon after, they made the decision to go into business together. After much research, they realised there was a gap in the interior design market and started an online business supplying exclusive imported wallpapers. Paper Room has grown rapidly and now offers a full interior design service.

PLAN



- KEY**
- 1 Bedroom
 - 2 Bathroom
 - 3 Deck
 - 4 Study
 - 5 WC
 - 6 Garage
 - 7 Living
 - 8 Dining
 - 9 Kitchen
 - 10 Walk-in wardrobe



PALETTE



BUDGET
+ Approximately \$8000 on redecorating.

15cm Diameter Fancy!

Autumn Lighting
Trending right now

Available at Mitre 10



MERCATOR

www.mercator.com.au
WALL LIGHTS/PENDANTS/DIY/TABLE & FLOOR

SHOP THEIR STYLE

Exquisite wallpapers bring sweeps of richness and texture into a soothing scheme of white and wood



'Cho Cho Chair' print, \$395, from Paper Room.



Artificial anthurium plant, \$32, from Kmart.



Stockholm grinders, \$12, from Kmart.

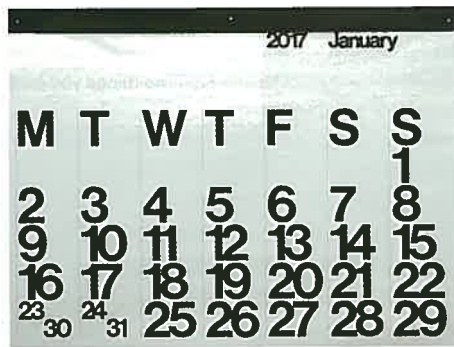
Pendant light, \$17, from Kmart.



Still Life with Asparagus stool, \$299, from Paper Room.



Broadway cushion, \$44.95, from Freedom.



Stendig calendar, \$125, from Paper Room.



Braided jute rug, \$385, from Zuca.



Cork Deco drawers, \$99.95, from Mocka.



Benson Grand sofa, \$2299, from Freedom.

FOR STOCKISTS TURN TO PAGE 139.

HONESTY BOX

+ **Sarah, what wouldn't you do again?** Install textured wallpaper while we have Missy the cat. She's an indoor cat (she's afraid of the neighbours' cat) and has treated Izzy's wallpaper like a tree in a couple of places. Mind you, this is the only wallpaper in the house that she's attacked.

+ **Best lesson learned?** I was a bit put off buying this house initially as it was fully renovated, and as a designer I really wanted a home that I could put my own stamp on. However, I've now learned that even if a home is a bit 'cookie cutter', or if you haven't had anything to do with the design or choice of fittings, you can still make it your own and inject personality into the home. We have achieved this by using wallpaper; for example we've now got 'wooden' walls and 'concrete' walls that you need to touch to see if they're real or not!

+ **Where have you saved money on your home's decoration?** On the wallpaper.

+ **What have you splurged on?** The Tolix B2 locker (from Madder & Rouge) in the kitchen – we didn't have enough cabinets and desperately needed more storage. The Comback rocker chair by Patricia Urquiola for Kartell – I love chairs and I conned Chris into buying this for my birthday a couple of years ago. The folding leather butterfly chair from Paper Room – another one for my chair addiction, and I adore this iconic design.

CONTACTS

+ **Shops** Paper Room, paperroom.co.nz

+ **Paperhanging specialist** Mark Sinclair from On A Roll, 021 105 2084, markcsinclair@vodafone.co.nz

FINISHES



1 Kitchen wall 'Geometric Relief' wallpaper by Ella Doran from Paper Room.

2 Living-room wall 'Concrete' wallpaper by Piet Boon from Paper Room.

3 Izzy's bedroom wall 'Savine' wallpaper in turquoise by Designers Guild from Paper Room.

MASTER BEDROOM

The striking jewel tones in the master bedroom at the top of the house may appear to contrast with the monochrome palette in the kitchen and living areas below, but Sarah has connected the two floors by using turquoise and gold cushions and black accents in the living room and black accents in the bedroom.



The end As you walk around this light-filled house you will be surprised. What looks like a bookcase in the lounge is a panel of Deborah Bowness' 'Genuine Fake Bookshelf', while in a corner of the kitchen, a pile of fashion and design magazines appears to be waiting to be studied. The horizontal hand-screen-printed 'Fork' by Tracy Kendall is another unexpected addition. The house, as well as being very liveable, is a lesson in what can be achieved on a reasonably limited budget with great imagination and flair. •

► Find the things you love from this home on page 138.



BEDROOMS

Eye-catching walls create personality-packed rooms for Izzy and Fletcher. The kids had a hand in choosing their own wallpapers to ensure they have spaces that reflect their individuality.

Teen spaces

Fletcher and Izzy's bedrooms are situated downstairs. Izzy's bedroom is a colourful and energising space that has been decorated in turquoise 'Savine' wallpaper by Designers Guild. The paper's blurred stripes contrast with the hot pinks, reds and oranges in her rag rug, the throws on the bed and the Marimekko cushion on her hanging pod chair.

Fletcher's room has a more subdued palette. On all walls the realistic 'Scrapwood' wallpaper creates an illusion of old demolition timber. A muted mix of grey checks, stripes and plain fabrics covers the bed, adding to the rustic charm. A trestle table along the wall holds a lamp that acts as both a desk light and a bedside reading lamp, while a round charcoal Armadillo rug anchors the room.

