



HAND PRINTED WALLPAPER + BORDERS BY
DEBORAH BOWNESS

HAND PRINTED WALLPAPERS + BORDERS BY DEBORAH BOWNESS

Making wallpaper as art since 1999

This Hand Printed collection of wallpapers encompass timeless classic and world renowned designs, regarded as beautiful, functional wallpapers and works of art.

Ordinary becomes Extraordinary. The Hand Printed Wallpaper Collection is uniquely crafted using traditional and modern techniques. Colours are mixed by hand and applied to machine printed paper using hand silk screen printing and hand painted embellishments. The handmade nature of the wallpapers contributes to its character and individuality. Each wallpaper drop is signed.

Decorating Differently. This Hand Printed Wallpaper Collection intends to inspire an original style of decorating, furnishing a room without filling its space. The designs provide interior spaces with an extra dimension; they encourage interaction with real objects and play on visual trickery. Trompe l'oeil re-imagined for the 21st century with a unique twist. The Hand Printed Wallpaper Collection, handmade in England represents highly original, luxury decorating at its very finest.

Page 2-5.....	WALLPAPER FROCKS
Page 6-9.....	UTILITY CHAIRS
Page 10-12.....	STANDARD LAMPS
Page 13-17.....	GENUINE FAKE BOOKS
Page 18-23.....	WALLPAPER COLLAGE
Page 24-39.....	HORNSEA HEIRLOOM
Page 40-43.....	ILLUSIONS OF GRANDEUR
Page 44-45.....	ILLUSIONS OF GRANDEUR BORDERS
Page 46-47.....	FLORA & FAUNA
Page 48-49.....	PICTURE WALL
Page 50-51.....	LIMITED EDITION WALLPAPERS
Page 53.....	HAND PRINTED WALLPAPER SPECIFICATION

Please Note: Unless otherwise stated wallpapers from this collection are printed onto drops measuring 56cm W x 330cm H. (22" W x 11' H). Shown in this catalogue are the original choices of colours. Custom paper widths & lengths as well as customised colours are all available upon request.

This award winning collection of life-size frocks can be displayed as single drops, hung in sequences, suspended as a scroll or permanently pasted to walls or wardrobes. Add real hooks & dresses to complete the illusion. HOOKS & FROCKS is held in the permanent collection at The Cooper Hewitt Design Museum, New York.





BAG

Yellow with red hand painted beading. Printed area measures 60cm (24").



HAWAIIAN DRESS

A blue dress with yellow hand painted belt. From hook to the bottom of dress measures 120cm (47").



FROCK

Candy pink or yellow.
From hook to bottom of
dress measures 110cm
(43.5").



HOOKS & FROCKS

*This set of 4 drops
makes up HOOKS &
FROCKS. Winner of a
Pergeut Design award
& held in the Cooper
Hewitt Museum NYC*



COAT

Pink or purple.
Measures 140cm (55")
from top of coat to
bottom of dress.



BALLGOWN

Pink or purple.
From hook to bottom of
dress measures 136cm
(53.5").



ROSE DRESS

Green or pink.
From hook to bottom of
dress measures 130cm
(51").



BLAAK DRESS

Bright pink. Measurement
from hanger to bottom of
dress is 132 (52").



TATA NAKA

Pale yellow and blue
dresses with hand painted
embellishment. Dresses
measure approximately
95cm (37.5").

UTILITY CHAIRS

There are nine chairs in the UTILITY CHAIR range of wallpapers. Hang as individual drops or in sequence with WALLPAPER FROCKS or STANDARD LAMPS. If you have a favourite chair, consider a bespoke wallpaper artwork.





CHO CHO CHAIR

Pink or green. Measurement from top of chair to bottom of paper - 130cm (51").



SALON CHAIR

Blue or grey. The measurement from top of chair to bottom of paper 102cm (40").



ROSIES CHAIR

Grey. Measurement from top of chair to bottom of paper 85cm (33.5").



GERALD'S CHAIR

Brown with green cushion.
It measures 110cm (43.5")
from top of chair to bottom
of paper.



DAY TOO CHAIR

Black. Measures 70cm
(27.5") from top of chair to
bottom of paper.



DAY CHAIR

Orange. Measurement from
top of chair to bottom of
paper is 73cm (29").



CHAIR LEFTSIDE

Pink or green. From top of chair to bottom of paper measures 92cm (36").



CHAIR

Yellow or blue. From top of chair to bottom of paper measures 96cm (38").



CHAIR RIGHTSIDE

Green or pink. From top of chair to bottom of paper measures 96cm (38").

STANDARD LAMPS

Hang wallpaper STANDARD LAMPS as individual drops or in sequence with other wallpaper objects from the collection, arrange your real furniture around the wallpaper accordingly. The V&A museum, London holds 3 STANDARD LAMP wallpapers in their prints, drawings & paintings collection.





SEMI DRUM

Blue shade & gold stand.
It measures 159cm (62.5")
from top of shade to
bottom of paper.

*HELD IN THE V&A PRINT
COLLECTION*



FLOWERY COOLIE

Blue or pink. Shade has
hand painted flowery
detail. It measures 142cm
(56.5") from top of shade to
bottom of paper.



SEMI DRUM X2

An orange shade & a yellow
shade. From the top of
orange shade to bottom of
paper measures 150cm (59")

*HELD IN THE V&A PRINT
COLLECTION*



FLOWERY COOLIE

Blue or pink. Shade has hand painted flowery detail. It measures 142cm (56.5") from top of shade to bottom of the paper.



ROUND DRUM

One shade is printed pink. From top of grey shade to bottom of paper the measures 150cm (59").



KIM'S LAMP

Yellow, blue or green. Each shade has hand painted flowery detail. Height of lamp - 192cm (75.5").



A vertical collage of five photographs showing a wooden ladder against a blue sky. The ladder is made of light-colored wood and has five rungs. The sky is a deep, clear blue. At the bottom of the collage, there is a textured, dark surface, possibly a rug or a piece of fabric. The collage is composed of five rectangular images stacked vertically, with some overlap between them. The overall effect is a sense of height and ascent.





From left to right -

LADDER

Add a ladder drop to a bookshelf installation or paste up as a solitary piece. Printed in white. From top of ladder to bottom of print measures ?????

Original Genuine Fake Bookshelf - Alcove One

Measures 250cm (98.5") from top shelf to bottom of paper. Some books are hand printed in blue and green, others are hand painted in yellow.

Original Genuine Fake Bookshelf - Alcove Two

Measures 250cm (98.5") from top shelf to bottom of paper. Some books are hand printed in blue and green, others are hand painted in yellow.

A black and white photograph of a tall, narrow bookshelf filled with books. The books are organized by subject, with labels like "BY SUBJECT" visible on the shelves. The spines of the books are visible, showing various titles and colors. The shelf is densely packed with books, and the lighting is somewhat dim, creating a sense of a quiet, scholarly space.

Comes in two standard colourways. Multi-coloured, which is hand printed in blue, yellow and green and hand painted in red. The Grey colourway is hand printed with grey over the monochrome machine printed background. There is no repeat pattern or pattern match along the length of this design.



NEW ANTIQUE BOOKS

The standard colours are three shades of brown or green, grey and yellow. Both colourways have hand painted books. There is no repeat pattern or pattern match along the length of this design.

WALLPAPER COLLAGE

The collection title aptly describes both the technique of applying the wallpapers and the resulting artworks made from the assemblage of different wallpaper pieces. The brightly coloured, attention grabbing patterns of this collection are interchangeable components of unique 'WALLPAPER COLLAGE'S'. Spots and Stripes are a central theme along with a loud two tone colour pallet. This is a versatile collection with predesigned, create your own or made-to-measure collage options. (See also machine printed wallpapers)



11

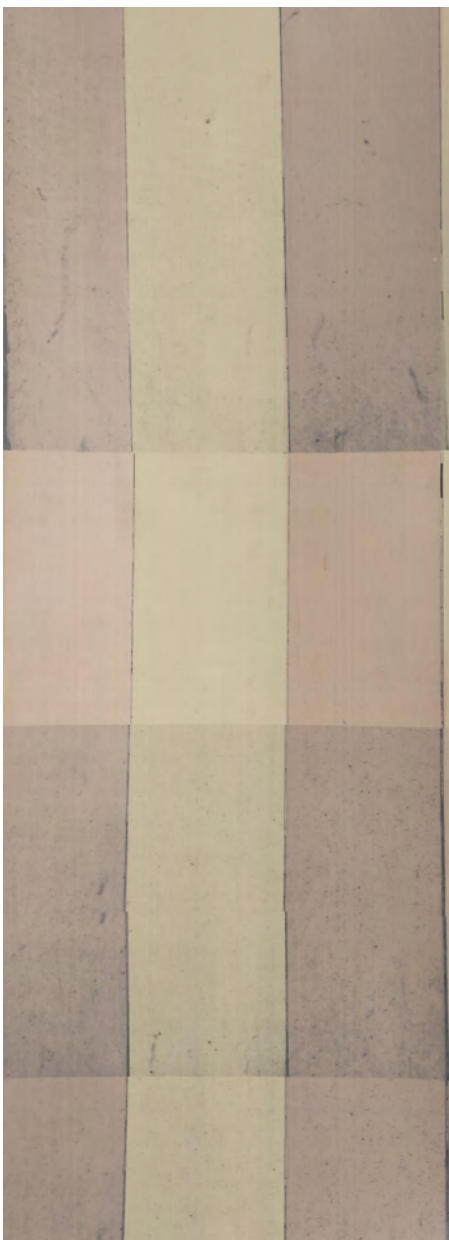


CRETE STRIPE

Blue, white & grey

Drop Dimensions: 52cm x
330cm (20.5" x 11')

Stripe repeats in an unconventional way along the length. Paste over a whole wall or pair with 'Stripe' to create a stand alone statement collage on a painted wall.



HASTINGS STRIPE

Pink & green / Pink & grey/ Pink
& yellow. Drop Dimensions:
52cm x 330cm (20.5" x 11')

Stripe repeats in an unconventional way along the length. Paste up in single colour way, combine different colours or add in other Stripes from the wallpaper collage collection.



FADED DAMASK WALLPAPER COLLAGE

Multicoloured

Collage Dimensions:

220cm max W x 135cm max H

20.5" max W x 110' max H)

Limited Edition of 25 collage

This collage made up of four wallpaper pieces can be pasted up on a painted wall.

Made-to-measure available.



MEMPHIS WALLPAPER COLLAGE

Multicoloured

Collage Dimensions:

220cm max W x 135cm max H

(20.5" max W x 110' max H)

Limited Edition of 25 collage

This collage made up of five wallpaper pieces can be pasted up on a painted or STRIPE wallpapered wall. Made-to-measure available.



SPOTS & STRIPES

Pink & yellow.

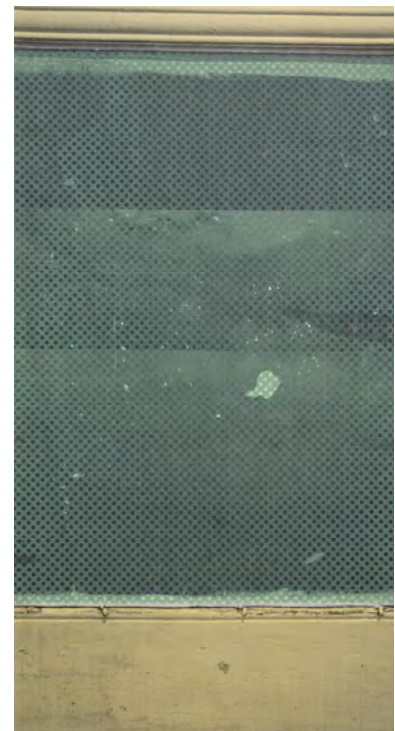
Roughly aligne chair rail by eye. Combine multiple drops of same colourway or hang in sequence with POLKA DOT PANEL and STRIPE



SPOTS & STRIPES

White, pink & blue

Roughly aligne chair rail by eye. Combine multiple drops of same colourway or hang alongside the POLKA DOT PANEL and STRIPE



POLKA DOT PANEL

Green & yellow/
Pink & white

Aligne chair rail by eye and paste as panelling along the bottom of a painted wall. Can also be paired with STRIPE wallpaper.



TWO-TONE

Colours from left to right Yellow white / Yellow yellow/ Yellow grey.

Drop Dimensions: 52cm x 330cm (20.5" x 11')

Paste as stand alone statement pieces on a painted wall or as multiples covering whole walls. Colour can be limited to a single colourway or brought together in different eye catching combinations. Consider adding a wallpaper 'Chair Rail'

HORNSEA HEIRLOOM

Designed in partnership with Hornsea Potteries. This Limited edition wallpaper & border collection centers on the HEIRLOOM pattern. Originally designed by John Clappison for Hornsea in 1966 and re-imagined by Deborah Bowness for the 21st century.







HEIRLOOM-STACKABLE

Colours from left to right - Sunshine/ Midnight Blue/ Lakeland/ Candy/ Orange/ Hang as a single drop or in sequence to fill a wall or entire room. Any number of STACKABLE drops in different colours can be combined on one wall. Alternatively hang with CYLINDRICAL to create unique wall decoration.



HEIRLOOM-CYLINDRICAL

Colours from left to right - Orange/ Midnight Blue/ Lakeland/ Sunshine/ Candy. Hang as a single drop or in sequence to fill a wall or entire room. Any number of CYLINDRICAL drops in different colours can be combined on one wall. Alternatively hang with STACKABLE to create unique wall decoration.





HEIRLOOM FLATWARE

Colours from left to right: Orange/ LakeLand Green/ Midnight Blue

Hang as a single drop or in sequence to fill a wall or entire room. Any number of 'Flatware' drops in different colours can be combined on one wall.



HEIRLOOM -TABLEWARE

Colours from left to right: Orange/ LakeLand Green/ Midnight Blue

Hang as a single drop or in sequence to fill a wall or entire room. Any number of 'Flatware' drops in different colours can be combined on one wall.



HEIRLOOM-MARK14

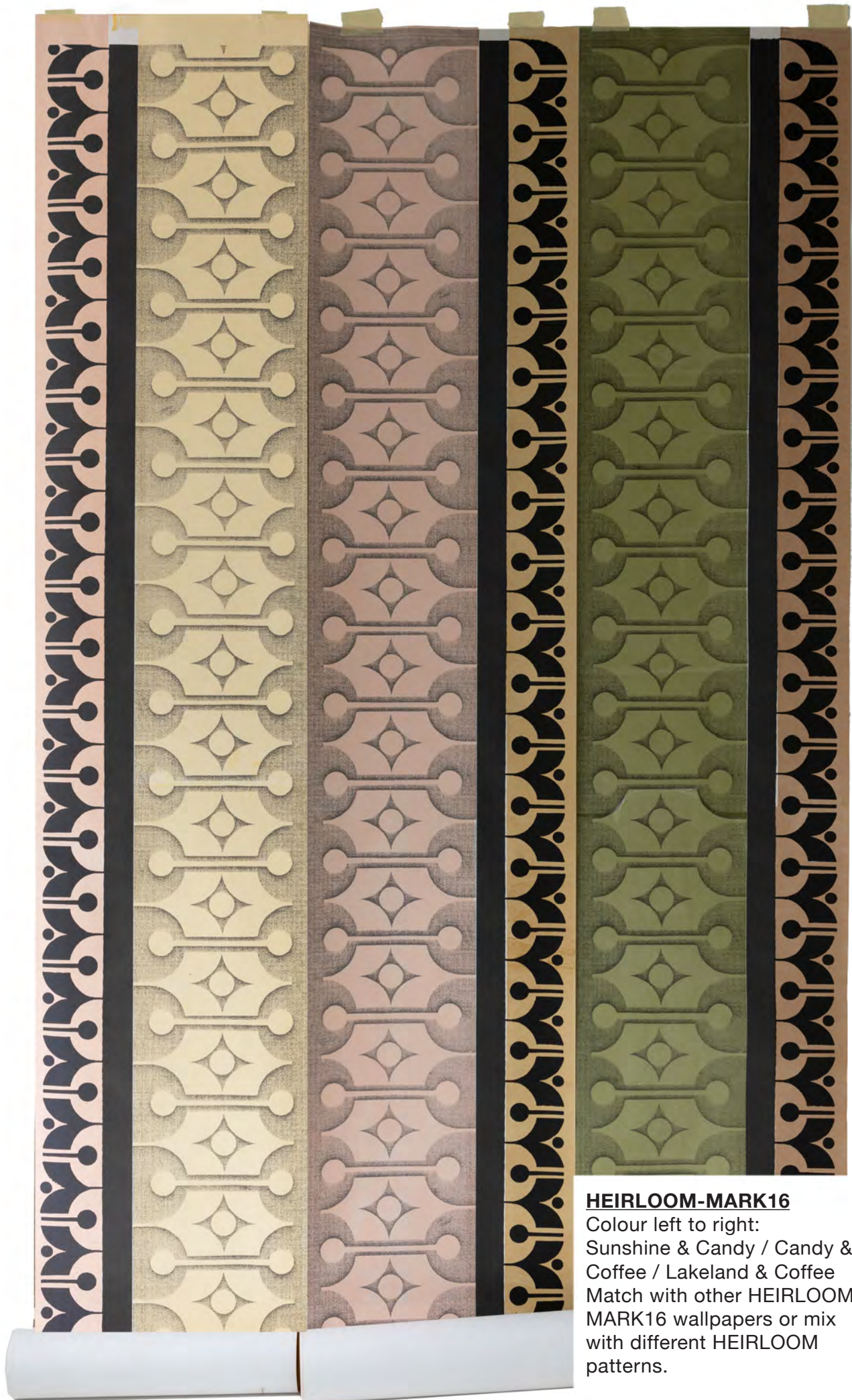
Sunshine & Candy /
Lakeland & Sunshine
Match with other HEIRLOOM
MARK14 colourways or mix
with different HEIRLOOM
patterns.

HEIRLOOM-MARK14

Autumn & Candy
Match with other HEIRLOOM
MARK14 colourways or mix
with different HEIRLOOM
patterns.

HEIRLOOM-MARK14

Lakeland & Coffee
Match with other HEIRLOOM
MARK14 colourways or mix
with different HEIRLOOM
patterns..



HEIRLOOM-MARK16

Colour left to right:
Sunshine & Candy / Candy &
Coffee / Lakeland & Coffee
Match with other HEIRLOOM
MARK16 wallpapers or mix
with different HEIRLOOM
patterns.



HEIRLOOM-Mark 18

Autumn & Sunshine /
Candy & Coffee

Match with other HEIRLOOM
MARK18 wallpapers or mix
with different HEIRLOOM
patterns.



HEIRLOOM-MARK 19

Orange & Autumn / Candy & Coffee

Match with other HEIRLOOM MARK18 wallpapers or
mix with different HEIRLOOM patterns.



HEIRLOOM - SEQUENCE 6

from left to right:

HEIRLOOM MARK 20

Orange/ Midnight Blue

HEIRLOOM-STACKBLE

Midnight Blue.

HEIRLOOM-CYLINDRICAL

Midnight Blue



From left to right:
HEIRLOOM MARK 20
Orange/ Midnight Blue
HEIRLOOM MARK 21
Autumn & Lakeland
Candy & Sunshine



HEIRLOOM-CYLINDRICAL
STRAIGHT SIDED

Colour: Sunshine

Roll Dimensions:

56cm x 330cm (22" x 130")

Pattern Repeats in an
unconventional way.





HEIRLOOM - STARTER SET BORDER

Colours top to bottom:
Candy/ Lakeland/ Yolk/
Midnight

Roll Dimensions: 11cm x
500cm (4.33" x 5.5yd)



HEIRLOOM - COFFEE SET BORDER

Colours top to bottom:
Autumn /Orange/Yolk/
Candy/ Midnight/ Sunshine

Roll Dimensions: 11cm x
500cm (4.33" x 5.5yd)





**HEIRLOOM -
DINNER SET BORDER**
Colours top to bottom:
Candy/ Midnight/ Orange/
Lakeland/ Yolk
Roll Dimensions: 11cm x
500cm (4.33" x 5.5yd")



HEIRLOOM BORDERS
Can be pasted above a
skirting, around the middle
of the room, below a ceiling
or used to frame doors and
windows. It can also be pasted
in combination with other
HEIRLOOM BORDERS.

**HEIRLOOM -
TEA SET BORDER**
Colours top to bottom:
Coffee/ Yolk/ Midnight/
Autumn/ Orange/ Sunshine
Roll Dimensions: 11cm x
500cm (4.33" x 5.5yd")







ILLUSIONS OF GRANDEUR wallpapers are shown to best effect covering an entire wall or room. Add finishing touches using Mirror Mirror and/or Fake Frames from the wallpaper cut-outs range.

From left to right

FANCY PANEL

White panelling with ornate gold hand painted detail.

Drop Dimensions:

52cm x 350cm (20.5" x 11')

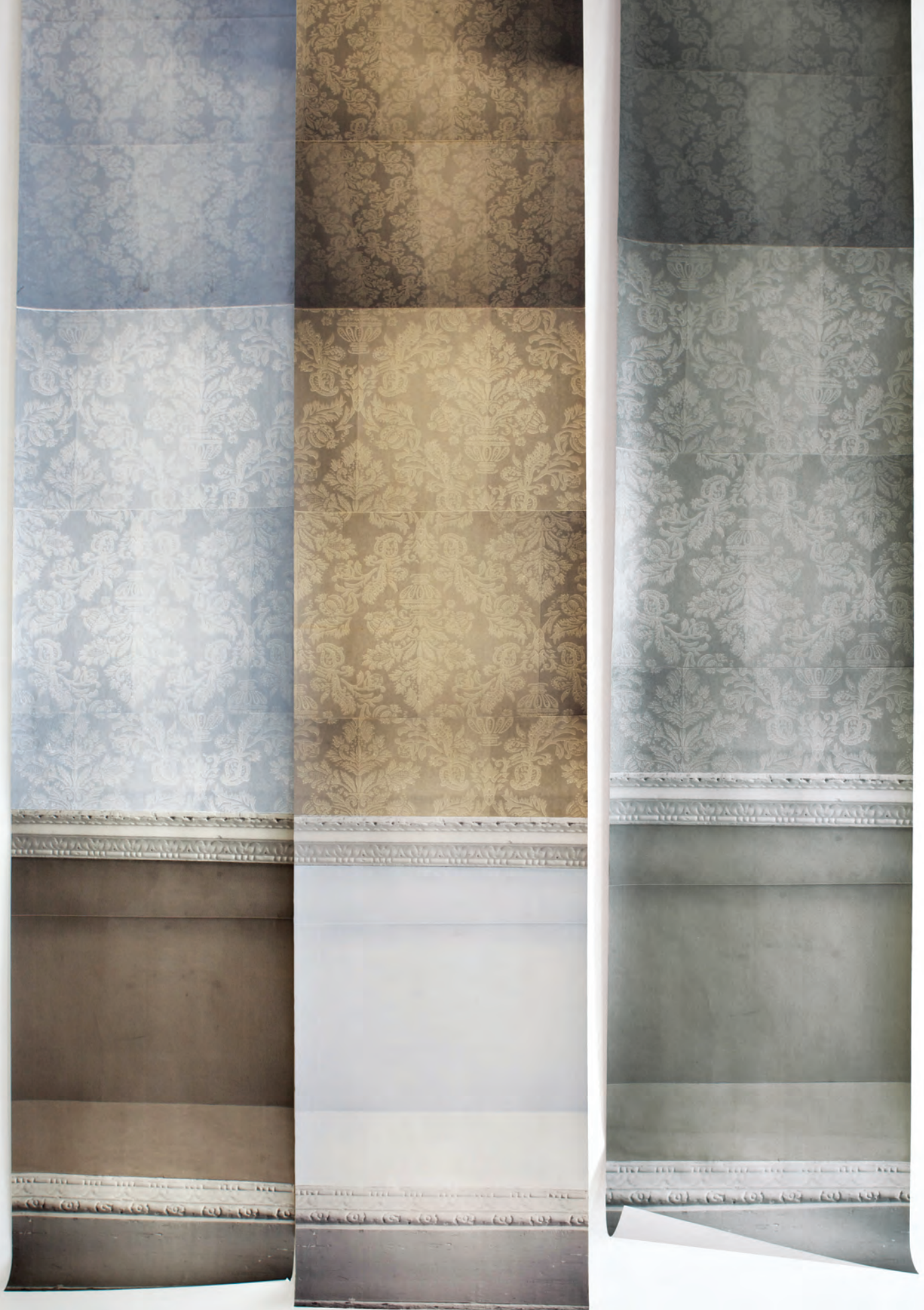
GILDED ILLUSION

These beautifully crafted panels are 140cm (56") high. They are hand printed in white and have gold hand painted detail.



PATTERNED ILLUSION ONE

Colourways left to right - Yellow/white, Blue/blue & White/gold. To give an idea of scale, print measures 87cm (34") from floor to dado rail (chair rail). Patterned area above dado rail measures 234cm (92").



PATTERNED ILLUSION TWO

Colourways left to right - Grey/white, Ivory/brown & Grey/silver. To give an idea of scale, print measures 87cm (34") from floor to dado rail (chair rail). Patterned area above dado rail measures 234cm (92").

ILLUSIONS OF GRANDEUR BORDERS

This collection of hand painted wallpaper decorative mouldings can be pasted high or low, around windows or doors, vertical or horizontal.





GILDED BORDER WIDE 35.5cm x 5m (8" x 5.5yd). Available in white & gold or grey & gold.



GILDED BORDER NARROW 16cm x 5m (6" x 5.5yd). Available in white & gold or grey & gold.



ORNATE BORDER 35.5cm x 5m (14" x 5.5yd). Available in white or grey





HANGING BASKET

Hangs as a single drop or as a sequence of drops along a wall. From top of paper to bottom of print measures 125cm (49"). Add Cagey Birds and/or Paper Parrot from the wallpaper cut outs collection.

PICTURE WALL





PICTURE WALL

**from left to right
FLAMINGO / RED ROSE /
RED SKIRT (LEFT) / RED
SKIRT (RIGHT)**

A curated and photographed selection of found junk shop art works and framed 70's prints create Picture Wall wallpaper. Four drops make up the complete Picture Wall. However, FLAMINGO and RED ROSE can be hung together or separately. RED SKIRT LEFT & RIGHT come as a pair. Hand printed, then hand painted each piece is unique and signed. To give the installation a third dimension, add real pictures. From top of pictures to bottom of paper measures 218cm (86").

LIMITED EDITION WALLPAPERS

COLLAGE PAPER

Wallpaper hand printed with a bold large scale red floral design. Made using found weaving patterns.

Limited Edition of 25 rolls. Each roll is numbered & signed.

Roll Dimention: 52cm x 10m (20.5" x 11yd)

COLLAGE PAPER is on a 10m (11yd) roll. The roll provides 3 drops which have a maximum Length of 333cm (131").





FARMHOUSE FLORAL

Wallpaper hand printed using hand cut stencils and an open screen technique.
Each drop is unique.

Limited Edition of 25 rolls. Each roll is numbered & signed.
Hang alone or in a series to fill a wall or entire room.



HAND PRINTED WALLPAPER SPECIFICATION

Our hand printed wallpaper & borders are easy to hang, each design comes packaged with specific hanging instructions. Please note wallpapers are hand printed to order, slight variations in colour may occur between batches, therefore we recommend ordering all the drops you need in one go.

Please also be aware there may be slight irregularities in the surface of the printed colour these are not faults they are the hand printed imperfections that make the wallpaper special and unique.

Paper Description: Uncoated, unbleached, natural wall covering made from pure paper pulp

Paper Thickness: 0.26mm

Application: Paste the paper

Recommended Adhesives UK:

'Solvite' powder based or 'Anaglypta' ready mix wallpaper adhesive.

Recommended Adhesives USA: 'Sure Grip' or 'Universal Roman 880 ultra clear'.

Recommended usage: Domestic & Commercial wall covering. Whilst our wallpapers are suited to most environments in kitchens & bathrooms or high traffic areas we recommend the application of a wallpaper varnish such as 'POLYVINE decorators' varnish. It is important to test before application as it may affect colours.

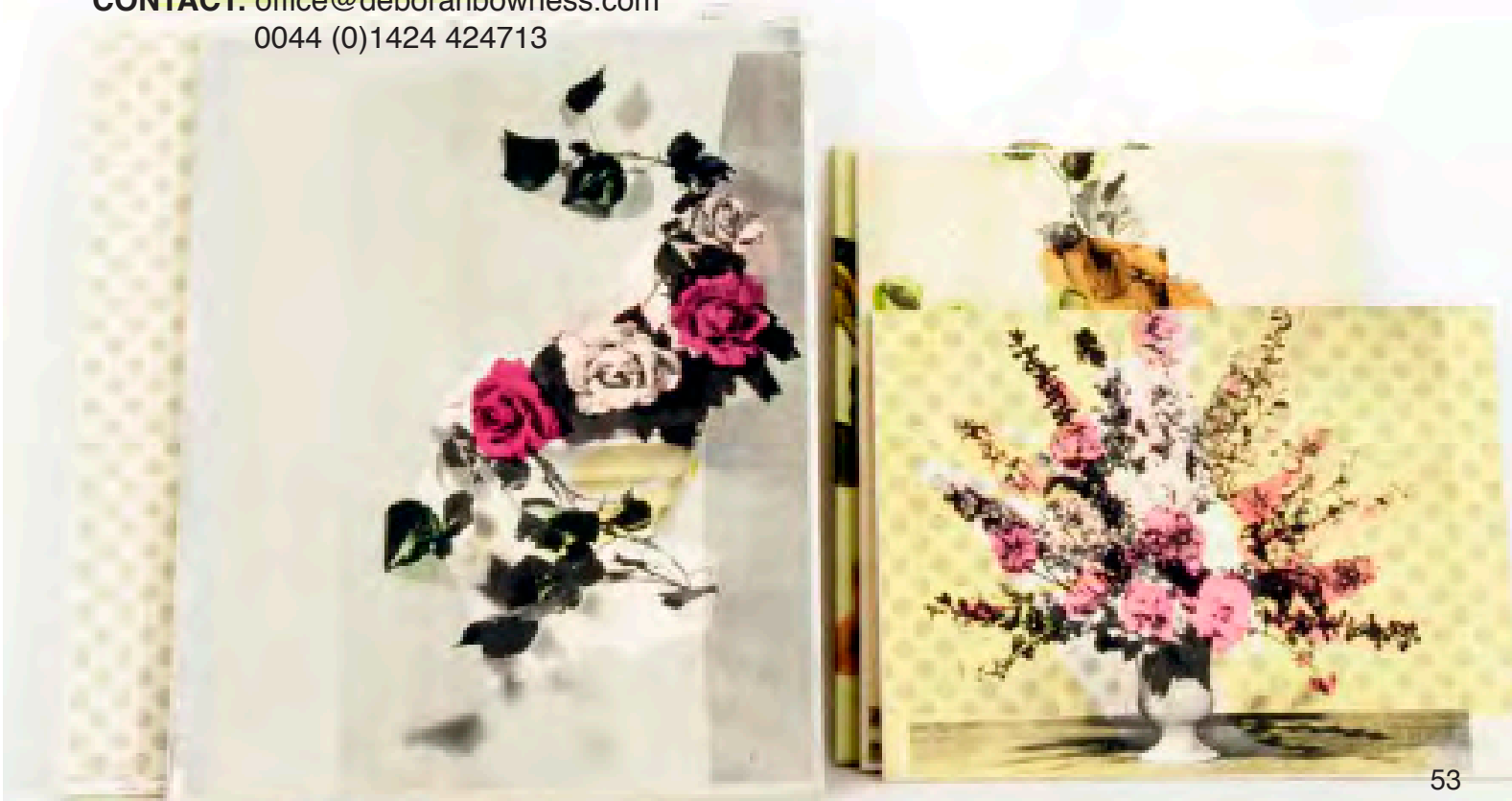
Care & maintenance: Our uncoated, natural wall coverings should be cleaned by dusting with a clean dry brush. Do not scrub wallpaper with abrasive materials as this could cause the print to be lifted.

Environmental: Paper - Environmentally Friendly, FSC or PEFC approved.
Ink - Magna colour water-based ink system, non-toxic & very low in VOC's

Fire Rating:

The Hand Printed Wallpapers can be fire proofed to British Standard 5867-2:2008 on request.

CONTACT: office@deborahbowness.com
0044 (0)1424 424713





www.deborahbowness.com
office@deborahbowness.com
00 44 (0)1424 424713